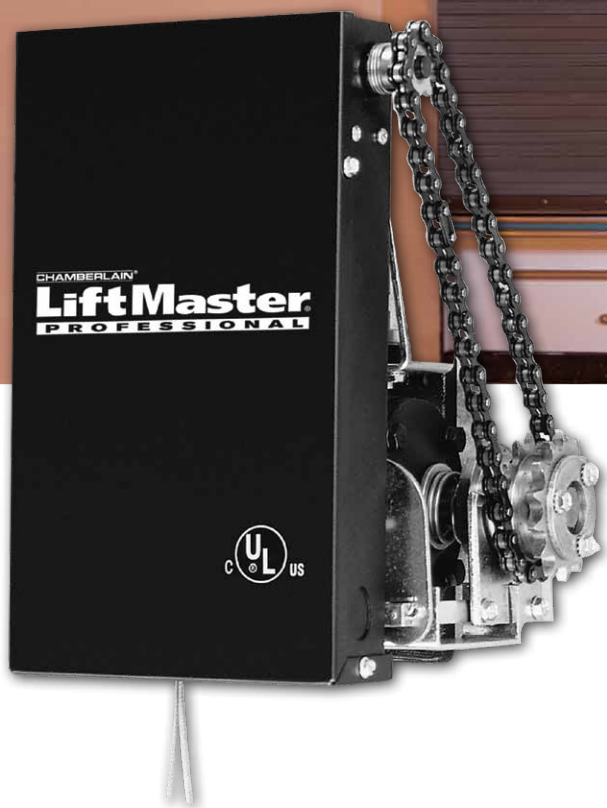


# LIGHT-DUTY GEAR-REDUCED JACKSHAFT OPERATOR

*Safest Installations. Smartest Innovations*

COMMERCIAL DOOR OPERATOR

MODEL  
L6J



**LiftMaster® Commercial Door Operators** are engineered, manufactured and tested to provide reliable service to meet the toughest commercial applications.

- For use on rolling grilles and shutters
- Internal door lock sensing circuit
- Compact design
- Floor level disconnect

**Ideal for use with counter shutters and rolling grilles.**

# LiftMaster®

# LGJ

## COMMERCIAL DOOR OPERATOR

MAXIMUM DOOR AREA (SQ. FT.)				
ROLLING	24 ga. Steel	22 ga. Steel	20 ga. 18 ga. Steel	16 ga. Steel
	Alum. Grilles	Alum. Doors	Alum. Grilles	—
SQ. FT.	65	55	45	40

## Standard Features

- Motor**  
 Powerful 1/4 HP, 115V single-phase motor with instant reverse and internal automatic reset thermal overload. Removable without affecting limit switch settings.
- Door Lock Sensing Circuit**  
 The model LGJ includes a speed sensor in the electrical enclosure and a sensing circuit which sends a signal to stop the motor if the door jams, such as would be caused by failure to release the lockbar of a rolling grille before starting the operator. In addition to stopping the motor, if the door or grille is in the fully closed position, it will drive the motor in the opposite direction for approximately 1 inch of door travel. This releases the pressure on the lockbar, thus allowing the lock to be easily opened.
- Floor Level Disconnect**  
 Floor level disconnect provides emergency manual operation.
- Operator/Motor Control**  
 Solid-state circuit (G2) with door lock sensing circuit (NEMA 1 enclosure).
- Control Circuit**  
 24V NEC Class 2.
- Wiring Type**  
 The model LGJ is easily wired for C2 or B2 wiring. The operator is pre-wired to accept a sensing device, photoelectric sensor, radio controls and most types of access control equipment.
- Drive Reduction**  
 Heavy-duty wormgear-in-oil-bath speed reducer.
- Push Button Station**  
 3-button station, for OPEN/CLOSE/STOP functions, is standard for all operators. Controls with 1, 2 and 3 buttons are available.
- Construction**  
 NEMA 1 type electrical box with baked-on powdercoat finish. Easily field-converted for right or left mounting.

## Control Accessories and Options

- Sensing Edge (recommended)**  
 Senses an obstruction and signals door operator to stop or reverse upon contact. Either an electric or pneumatic sensing device can be added to bottom edge of door.

# LiftMaster®

## Commercial Door Operators

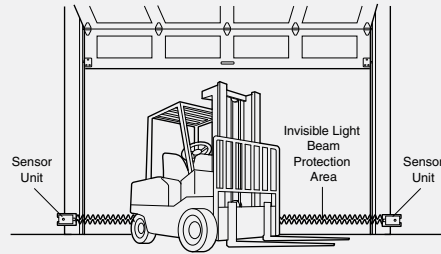
THE CHAMBERLAIN GROUP, INC.  
 845 Larch Avenue • Elmhurst, IL 60126  
[www.liftmaster.com](http://www.liftmaster.com) • <http://specs.liftmaster.com/architectscorner>

- Radio Control**  
 Universal transmitters and receivers are available to signal the operator to open and/or close.
- Emergency Egress Device**  
 Attractive faceplate mounts flush to the wall and contains a handle to disconnect the operator from the grille, thereby allowing the grille to be opened manually or by spring tension.
- Rolling Door Interlock Switch**  
 Interlock switch disables the operator control circuit when a manual door lock is engaged, preventing damage to the door and operator.

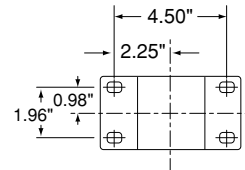
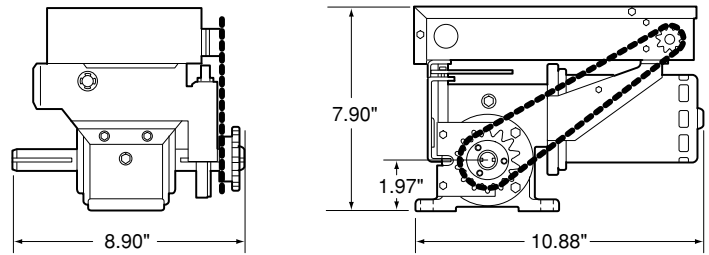
### CPS-U / CPS-UN4 Commercial Protector System®

These photo sensors are designed to sense an obstruction and instruct the operator to reverse the closing door to the full open position.

- Signals operator continuously to provide regulatory mandated requirements regarding monitored entrapment protection
- LED indicators for quick alignment
- Safety of a non-contact infrared reversing sensor
- Heavy gauge mounting brackets
- Quick installation and pre-molded for 1/2" trade size conduit fitting (CPS-UN4)
- Bright yellow safety color
- For CPS-UN4, watertight NEMA 4 design



## Clearance and Mounting Details



MOUNTING DIMENSIONS



GARAGE DOORS

CHAMBERLAIN IS AN ISO9001:2008 REGISTERED COMPANY



Chamberlain reserves the right to make design or specification changes without notice.  
 ©2010 The Chamberlain Group, Inc. Printed in U.S.A. 08/10 LMCDO/GJ rev 8/10